

BOUNDARY DATA

TRACT 1
 (P.O.B. AT NORTHWEST CORNER)
 N 86°05'27" E 761.52'
 N 83°37'19" E 375.93'
 S 20°50'34" E 212.50'
 S 70°32'43" W 98.51'
 N 87°28'58" W 30.78'
 S 67°45'45" W 22.33'
 N 87°52'31" W 301.37'
 S 59°53'03" W 537.81'
 (SEE DATA FOR CURVE "K") 30.00'
 N 57°46'42" W 98.31'
 (SEE DATA FOR CURVE "L") 58.24'
 (SEE DATA FOR CURVE "M") 51.72'
 (SEE DATA FOR CURVE "C")

TRACT 2
 (P.O.B. AT WESTERMOST CORNER)
 N 59°53'03" E 537.81'
 S 67°52'31" E 301.37'
 S 41°29'58" W 882.71'
 N 39°52'21" W 378.53'
 (SEE DATA FOR CURVE "U") 16.01'
 N 34°33'28" W

TRACT 3
 (P.O.B. AT WESTERMOST CORNER)
 N 50°07'39" E 32.00'
 N 41°29'58" E 683.71'
 N 87°45'45" E 22.33'
 S 87°28'58" W 30.78'
 N 70°32'43" E 98.51'
 S 20°50'34" E 212.50'
 S 42°52'21" W 644.33'
 S 54°53'54" W 127.58'
 N 39°52'21" W 254.99'

TRACT 4
 (P.O.B. AT NORTHERNMOST CORNER)
 (SEE DATA FOR CURVE "G") 16.01'
 S 34°33'28" E 98.31'
 (SEE DATA FOR CURVE "H") 379.93'
 S 39°52'21" E 254.99'
 S 54°53'54" W 143.99'
 N 73°00'00" W 562.00'
 N 02°00'50" W 92.33'
 N 21°30'08" E 154.55'
 N 01°11'14" E 40.14'
 N 23°53'14" E 264.61'

TRACT 5
 (P.O.B. AT NORTHERNMOST CORNER)
 S 74°03'39" E 56.00'
 (SEE DATA FOR CURVE "D") 58.24'
 S 43°49'45" E 98.51'
 S 57°46'42" E 30.00'
 (SEE DATA FOR CURVE "F") 264.61'
 S 23°53'14" W 98.31'
 N 73°00'00" W 105.03'
 N 58°12'40" W 105.03'
 N 75°14'13" W 193.77'
 S 75°14'13" W 39.12'
 S 45°52'33" W 77.43'
 N 18°23'49" E 37.60'
 (SEE DATA FOR CURVE "A") 166.56'
 (SEE DATA FOR CURVE "B")

TRACT 6
 (P.O.B. AT WESTERMOST CORNER)
 N 18°23'49" E 206.00'
 N 45°52'33" E 77.43'
 N 76°37'15" E 39.12'
 S 75°14'13" E 193.77'
 S 59°12'40" E 105.03'
 S 75°30'07" E 88.31'
 S 01°11'14" W 40.14'
 S 21°50'08" W 154.55'
 S 02°00'50" E 92.33'
 N 73°00'00" W 45.00'
 N 73°00'00" W 235.00'
 N 73°00'00" W 206.00'

(CALLS ARE LISTED CLOCKWISE)

CURVE DATA

CURVE "A"	CURVE "G"
Radius = 350.6744	Radius = 277.3088
Delta = 28° 01'38"	Delta = 12° 05'56"
Length = 171.5377	Length = 58.5577
Chord = 189.8326	Chord = 58.4480
Tangent = 87.5211	Tangent = 29.3882
Deg Curve = 16° 20'19"	Deg Curve = 20° 39'41"

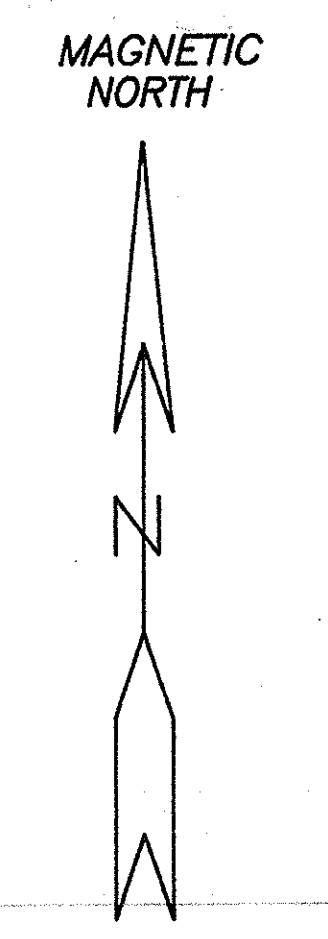
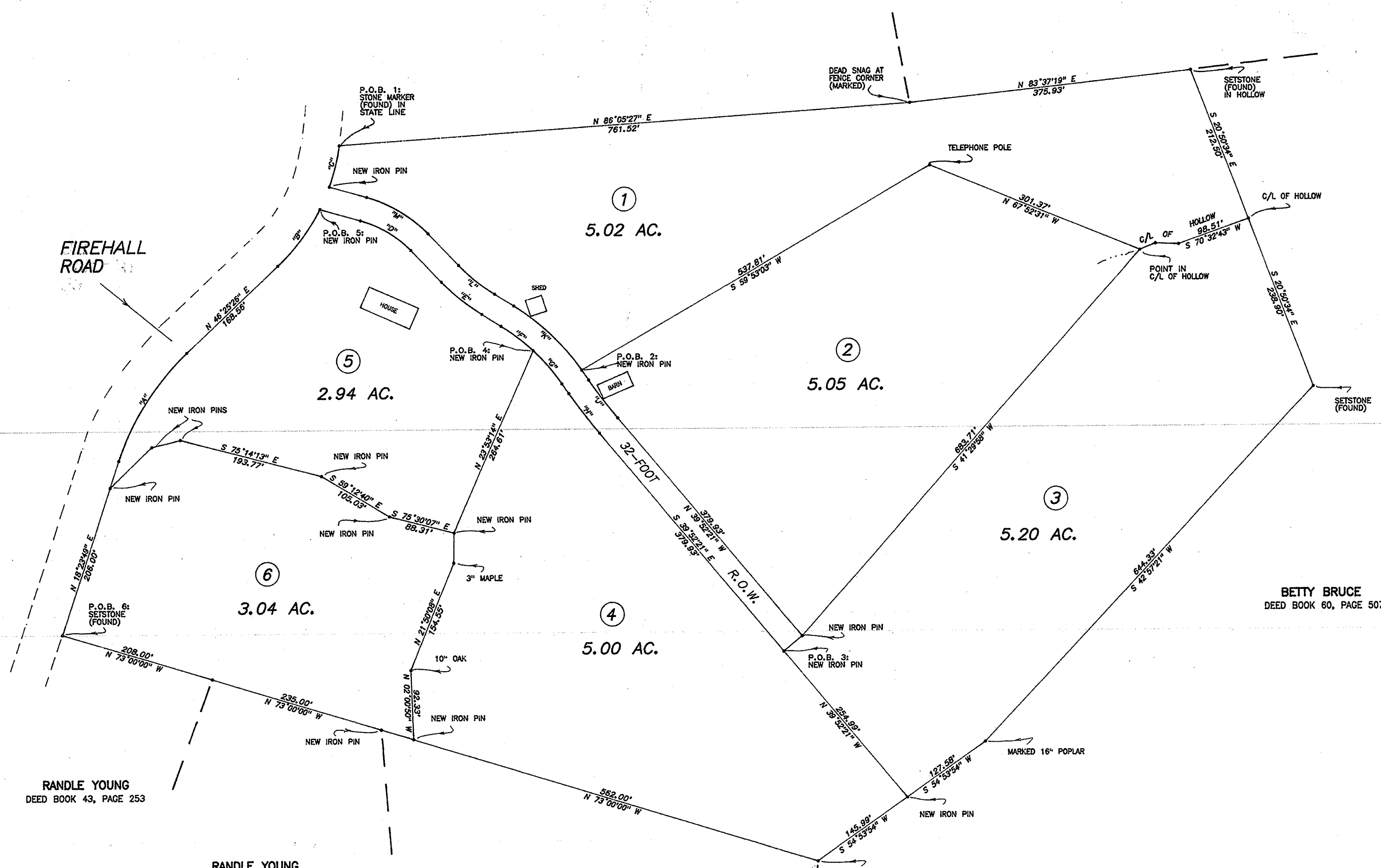
CURVE "B"	CURVE "H"
Radius = 269.1241	Radius = 722.1458
Delta = 20° 01'53"	Delta = 5° 18'54"
Length = 94.0882	Length = 66.9877
Chord = 93.6107	Chord = 66.9637
Tangent = 47.5297	Tangent = 33.5179
Deg Curve = 21° 17'23"	Deg Curve = 7° 58'03"

CURVE "C"	CURVE "J"
Radius = 269.1241	Radius = 690.1458
Delta = 12° 05'31"	Delta = 5° 18'54"
Length = 56.7973	Length = 64.0184
Chord = 56.6920	Chord = 63.9964
Tangent = 28.5048	Tangent = 32.0326
Deg Curve = 21° 17'23"	Deg Curve = 8° 18'07"

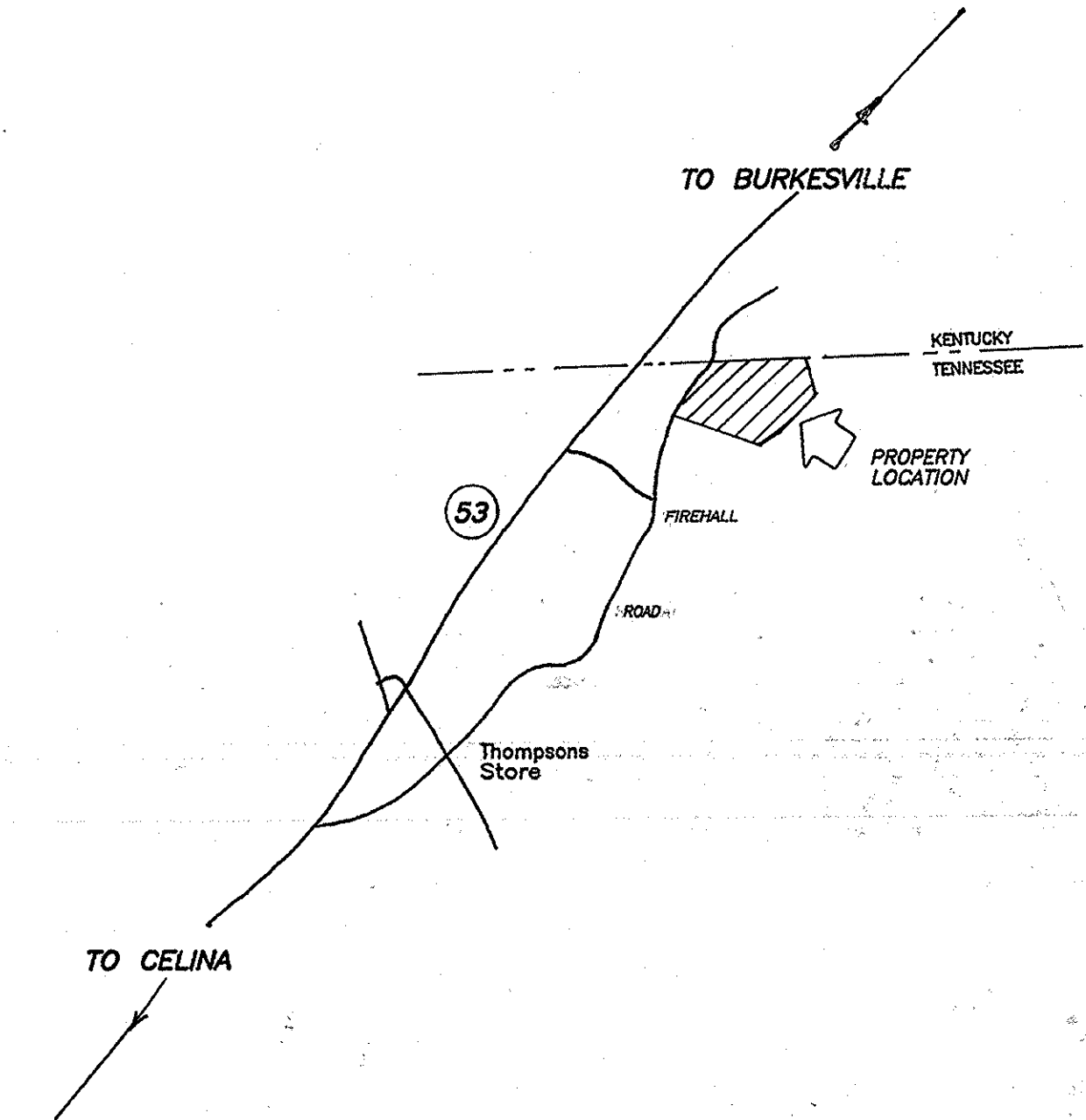
CURVE "D"	CURVE "K"
Radius = 149.2808	Radius = 309.3088
Delta = 30° 13'54"	Delta = 23° 13'15"
Length = 78.7670	Length = 125.3659
Chord = 77.6565	Chord = 124.4998
Tangent = 40.3234	Tangent = 63.5502
Deg Curve = 38° 22'52"	Deg Curve = 18° 31'26"

CURVE "E"	CURVE "L"
Radius = 285.9014	Radius = 253.9014
Delta = 13° 56'58"	Delta = 13° 56'58"
Length = 69.6065	Length = 61.8157
Chord = 69.4347	Chord = 61.6831
Tangent = 34.8782	Tangent = 31.0514
Deg Curve = 20° 02'25"	Deg Curve = 22° 33'58"

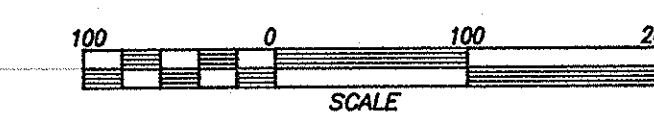
CURVE "F"	CURVE "M"
Radius = 277.3088	Radius = 181.2808
Delta = 11° 07'18"	Delta = 30° 13'54"
Length = 53.8285	Length = 95.6516
Chord = 53.7440	Chord = 94.5459
Tangent = 26.9931	Tangent = 48.9672
Deg Curve = 20° 39'41"	Deg Curve = 31° 36'22"



VICINITY MAP SCALE: 1" = 2000'



CERTIFICATE OF ACCURACY
 I HEREBY CERTIFY THAT THIS IS A CATEGORY SURVEY AND THE RATIO OF PRECISION OF THE UNADJUSTED SURVEY IS 1:10,000 AS SHOWN HEREON. PROPERTY IS SUBJECT TO ANY EASEMENTS OR ENCUMBRANCES THAT ARE OF PUBLIC RECORD.



MARK & MARIE CARLISLE • JAMES & LONNIE McKENNIE		
3RD CIVIL DISTRICT • CLAY CO., TN		
SCALE: 1" = 100'	APPROVED BY: CJW	DRAWN BY: MCD
DATE: 2-12-07		REVISED:
DEED REFERENCE: DEED BOOK 83, PAGE 132, R.O.C.C.T.		
TAX MAP 9, PARCEL 5		
WIGGINS LAND SURVEYING & DRAFTING COMPANY		DRAWING NUMBER
BOX 191, GAINESBORO, TN. (931)268-9215		CARLISLE